

# HIGH SPECIFICATION GAS & CO WARNING ALARMS



Electrical

Gas warning systems protect lives and health by monitoring the atmosphere inside any enclosed space and triggering optical & acoustic alarms, as soon as the concentration of the gas that is being monitored exceeds the preset threshold level. Our gas warning systems are based on semiconductor sensors that have proved themselves over many years of reliable operation. **KombiAlarm** is the ultimate in gas safety warning alarms.

## KOMBIALARM COMBINED GAS AND KO-GAS WARNING SYSTEM

The **KOMBIALARM** is a self-sufficient warning system with a built-in sensor and an audible and visual alarm-signalling unit. It is equipped with a specially designed sensor that enables the system to work as a **gas** and **KO-gas alarm system at the same time**. When gas is detected a loud buzzer sounds to deter intruders and wake the occupants.

Depending on the needs and size of the vehicle or vessel, the system is also available to connect two additional sensor units.

The additional sensors are available in two versions, one for the detection of gas (Propane, Butane & Methane) and Anaesthetic (KO) gases or Ether, sometimes called narcotic or "sleeping" gasses. The other sensor is for the detection of carbon monoxide or smoke. The additional sensors can be connected to either sensor output 2 or 3.

One additional switching relay allows the connection of remote alarm units (e.g. strobe flashlight).

### **KMBALSTL**

The **KOMBIALARM** detects even the smallest concentrations of KO-gas before it is able to display its intoxicating effect on the passengers and disables their ability to react. The threshold for butane, propane and methane lies well below the igniting point (when the concentration turns volatile) of the gas. Another special feature is the systems relatively low power consumption. After a short warm-up period the alarm is ready for use as the sensor threshold settings are fully automated. LED's indicate power ON, alarm and fault conditions. Operates on 12 Volt DC supply.

**Area of use: Boats, Caravans, Motorhomes, Holiday homes, Truck cabs**

## KOMBIALARM COMPACT MOTORHOME

The KombiAlarm Compact, our most popular unit, is designed for Caravans and Motorhomes and Truck cabs, where the installation of a one sensor unit is sufficient to detect gas and KO-gas. The unit is an easy to fit self-contained unit housed in a neat robust casing. Size H 90mm x W 115mm x D 30mm

**KMBCMP** KOMBIALARM COMPACT

## KOMBIALARM MULTI SENSOR MARINE

The KombiAlarm is designed for Marine use or the larger motorhome & caravan. It has all the functions of the compact with the facility to add, as and when required, an additional two sensor units (order separately) and a relay output for additional remote alarm units (e.g. strobe flashlight). Size H 90mm x W 115mm x D 30mm

**KMBALRM** KOMBIALARM MULTI SENSOR

**KMBALSTL** STROBE FLASHLIGHT

## ADDITIONAL SENSORS FOR KOMBIALARM MARINE

The use of additional sensors increases the early warning capability of the system. This is particularly suited to boats as Narrowboats can be 70 feet long with multiple rooms. Additional gas sensors can be mounted at low level to pick up gas leaks quicker and CO sensor high level for early indications of CO build up. Sensor sizes H/W/D 50x50x24 mm.

## SENSOR (Gas and KO-Gas) FOR KOMBIALARM MARINE

This sensor detects LPG, Propane, Butane and Methane Gas and Anaesthetic KO- Gas. This sensor can be used as second or third sensor unit. 3 m connection cable included (extendable).

**KMBALSG** KOMBIALARM EXTRA SENSOR GAS AND KO GAS

## SENSOR CO (Carbon monoxide and smoke) FOR KOMBIALARM MARINE

This sensor detects carbon monoxide (CO) the dangerous fumes produced by faulty or poorly serviced gas appliances. This sensor can be used as second or third sensor unit. 3 m connection cable included (extendable).

**KMBALSCO** KOMBIALARM EXTRA SENSOR CO

## GAS WARNING SYSTEM CAMP SIGNAL

The series **camp signal** model is a self-sufficient warning system that incorporates the sensor and the acoustic signalling unit in addition to the semiconductor based electronics. It is designed to work with a 12 Volt DC supply. Size 55 mm ø, Height 30 mm. **Area of use: Caravans, Motorhomes, Boats, Holiday homes**

**CMPSIGP** CAMP SIGNAL FOR MONITORING GAS

**CMPSIGC** CAMP SIGNAL FOR MONITORING CO

## CBE COMPACT GAS LEAK.

## ANAESTHETIC GAS & CARBON MONOXIDE DETECTORS

Latest electronic technology providing the utmost reliability and accuracy in a compact housing. The detectors provide peace of mind protection for the occupants.

The combined LPG and anaesthetic gas detector (**MTG/G**) has been specially developed to combat the threat of nighttime robbery, which is spreading in Europe. While parked at night anaesthetic gas is sprayed into vehicle vents allowing access for theft without you knowing until you awake. This is particularly prevalent in southern Europe and France. The carbon monoxide detector (**MTCO/G**) will warn of faulty flued or poor burning quality gas appliances, particularly useful if heaters are left on at night.



**KMBCMP** KOMBIALARM COMPACT



**KMBALRM** KOMBIALARM MULTI SENSOR MARINE

### **Specifications of KombiAlarm**

Operating Voltage	12 Volts DC
Consumption Standby	90 mA
Consumption Alarm	145 mA
Consumption extra sensor	60 mA
Electronic siren loudness	85 dB (A) / 3 m

### **Sensor Thresholds Gas**

Butane	0.4%
Propane	0.5%
Methane	0.8%

### **Sensor Thresholds KO gas**

Anaesthetic	100 ppm
-------------	---------



**KMBALSG**



**CAMP SIGNAL CO**

## NEW INOVTECH Pro-Gaz GAS DETECTOR.

A complete solution, easy to install. Detects carbon monoxide, narcotic gas & gas leakages. High power sound and visual alarm. The kit includes: the management unit with test function and On/Off button, two wire-linked gas detectors (5m long linking cables), a wall-mounting kit with screws and two warning stickers. Operates at 12/24v DC 70 consumes just 0.3Amp. Size (WxHxD); management unit 108x94x45 mm, Sensor 82x 49x 35 mm. Order Code. **KMBPROGAZ**



**Gas leakage and carbon monoxide detector**



**Narcotics gas detector**



## WAECO MagicSafe DMSG 150 Gas detector 12 and 24 volts

How do you know if gas from an on-board supply has leaked into your vehicle? Probably only when it is too late ... The WAECO MagicSafe MSG 150 gas detector protects you. It reliably detects the presence of narcotic gases in the atmosphere and immediately triggers the alarm: the integrated buzzer emits an audible signal and the red LED flashes. Simultaneously, the output relay is switched on. It can be used to activate external alarm units up to 10 A. You can silence the audible alarm by pressing a button. The same button can be used to start the sensor's function test. Detects all common narcotic gases based on ether, chloroform, butane, ethane and trichlorethene. It automatically adjusts to the room atmosphere. Can be fitted as a stand-alone device or in combination with the MagicSafe MS 650, MS 660 and MS 670 alarm systems. Audible and visual alarm signals. Self-cleaning gas sensor

**DMSG-150**

**DMSG150** WAECO MagicSafe Gas detector



**MTG/G**  
Gas leak detector for LPG and anesthetic gas 12V



**MTCO/G**  
Carbon monoxide detector 12V

WE NOW OFFER INSTALLATION SERVICE BY [SupremeTech.co.uk](http://SupremeTech.co.uk)



**0844 414 2324**



**0844 414 2425**

## C 860 CONTROL SYSTEM SOLD ONLY AS KITS

C860 control panel with led indicators has the following functions: battery 1 - battery 2 levels led display, fresh and waste tank levels, 12 volt master switch, pump switch & two lighting switches, fridge relay, split charge relay. All switches have blade fuse circuit protection. Red, white & black multi-way plugs supplied for customer to wire in their own wiring harness. Control panel dimensions 308mm x 98mm. Order Code C860. The kit comprises of the following items.

- C860** ANALOGUE LED CONTROL PANEL WITH FUSES
- CHCB510** SWITCHING BATTERY CHARGER.
- CSB40-S** AUTOMATIC BATTERY SEPARATOR WITH FUSES FOR FRIDGE, BATTERY & EQUIPMENT.
- SP5/40** LEVEL PROBES FRESH TANK 400mm (can be cut to size).
- SSP** STUDS FOR HIGH LEVEL WASTE GAUGE.
- CCS860** CABLE LEVEL INDICATORS L = 6m



**C860**

## PC100 CONTROL SYSTEM SOLD ONLY AS KITS

PC100 microprocessor control panel with LED display has the following features, voltage levels battery 1 - battery 2, fresh & waste water tank levels, switches for pump, lighting and fridge. Battery recharge control, low voltage remote control of functions at panel which are switched at distribution board. This reduces the spaghetti of wiring normally going all the way to the control panel. Now only the control wire runs from panel to distribution box. Panel dimensions 192mm x 78mm. DS-300 distribution box 180x150x85mm. Order code **PC100**. The kit comprises of the following items.

- PC100** ANALOGUE LED CONTROL PANEL
- CB510** SWITCH MODE BATTERY CHARGER
- DS 300** 12V DISTRIBUTION CONTROL BOX WITH 9 FUSED CIRCUITS.
- SP5/400.** LEVEL PROBES FOR FRESH TANK.
- SSP** STUDS FOR HIGH LEVEL WASTE GAUGE.
- CCS910** CABLE LEVEL INDICATORS L = 6m
- CP973-6** CABLE CONTROL PANEL L = 6m



**PC100**

## PC 200 CONTROL SYSTEM SOLD ONLY AS KITS

PC200 microprocessor control panel with LCD display has the following features, voltage battery 1 - battery 2 in volts, power consumption if activated, tank levels in percentage, internal and external temperature, switches for pump, lighting and fridge. Battery recharge control, low voltage remote control of functions at panel which are switched at distribution board. This reduces the spaghetti of wiring normally going all the way to the control panel. Now only the control wire runs from panel to distribution box. Panel dimensions 192mm x 78mm. DS-300 distribution box 180x150x85mm.

**Must be ordered separately to size required SPE/... LEVEL PROBE FRESH TANK. (PAGE 91)**  
Order code **PC200**. The kit comprises of the following items.

- PC200** DIGITAL CONTROL PANEL WITH LCD DISPLAY
- CB516** SWITCH MODE BATTERY CHARGER
- DS 300** 12V DISTRIBUTION CONTROL BOX WITH 9 FUSED CIRCUITS.
- SSP** STUDS FOR HIGH LEVEL WASTE GAUGE.
- CCS200** CABLE LEVEL INDICATORS L = 6m
- CP973-6** CABLE CONTROL PANEL L = 6m
- CTIE** CABLE TEMPERATURE SENSORS INTERNAL & EXTERNAL



**PC200**

## NEW PC220 CONTROL SYSTEM SOLD ONLY AS KITS

PC220 control panel is a Microprocessor controlled system with a 7 colour graphic LCD screen, has the followings functions: digital clock, vehicle battery test (volt and graphic), Leisure battery (volt and graphic), drinking water tank level (percentage and graphic), internal and external temperature test, Electronic battery separator, fridge control, protection fuses, vehicle battery recharging control, Leisure battery low voltage protection function. Control panel dimensions 181 x 131 mm, DS-300 distribution box 180x150x85mm.

**Must be ordered separately to size required SPE/... LEVEL PROBE FRESH TANK. (PAGE 91)**  
Order code **PC220**. The kit comprises of the following items.

- PC220** DIGITAL CONTROL PANEL WITH LCD DISPLAY
- CB510** SWITCH MODE BATTERY CHARGER
- DS 300** 12V DISTRIBUTION CONTROL BOX WITH 9 FUSED CIRCUITS.
- SSP** STUDS FOR HIGH LEVEL WASTE GAUGE.
- CCS200** CABLE LEVEL INDICATORS L = 6m
- CP973-6** CABLE CONTROL PANEL L = 6m
- CTIE** CABLE TEMPERATURE SENSORS INTERNAL & EXTERNAL



**PC220**

## CBE SWITCH MODE BATTERY CHARGERS

are specifically designed for the motorhome, caravan and boating sectors. The battery charger can remain connected or be continuously on, as it automatically chooses the charging needs of the battery.

### CB500 series.

The high frequency switching technology provides higher performance levels as well as a reduced weight and size.

The switching battery charger can automatically charge 12v batteries (lead-acid, AGM or gel). The battery charger is protected against overheating and the 12 V outputs are protected against possible short circuits and polarity reversal.

The charging process "IUoU" takes place in four stages:

- 1) Battery charging with maximum current until the end-charge voltage is reached.  
NOTE: the end-charge voltage can only be reached if the battery is fully efficient.
- 2) When the end-charge threshold is reached the battery charger continues to operate for 90 minutes (lead-acid batteries) or 8 hours (lead-gel batteries) with constant voltage.
- 3) Constant voltage holding at 13.8 V (gel batteries.) or 13.5 V (lead acid batteries.).
- 4) After 10 hours, the battery charger switches to the Stand-by mode and begins to charge again only when the battery voltage is lower than 13 V.



**NEW CB500 series** switch mode chargers 10 > 22 amp.

- CHCB510** 10 Amp CB500 charger 12v
- CHCB516** 16 Amp CB500 charger 12v
- CHCB522** 22 Amp CB500 charger 12v
- CHCB51624** 8 Amp CB500 charger 24v

### DSSR

This DIN module is added to the DS-120S mains consumer unit to automatically switch from mains hook up plug to generator or vice versa to prevent electrical damage 240 20Amp

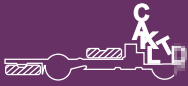
**DSSR** Auto mains power change over switch



**DS-SR**

WE NOW OFFER INSTALLATION AND SAFETY INSPECTION SERVICE BY [SupremeTech.co.uk](http://SupremeTech.co.uk)





# CBE & ELECTRICAL ACCESSORIES



Electrical

## CBE BERKER MODULAR PLATES

For neat, simple & stylish installation of switches, mains outlet sockets, TV, satellite, 12 volt and other electrical accessories. The CBE Berker modular plates system uses a BMAC CORNICE to install control module, and to hide the fixings. The modules cannot be installed without the use a BMAC cornice.



**BMAC1/GR BERKER**  
1 MODULE COVER  
FRAME



**BMAC2/GR BERKER**  
2 MODULE COVER  
FRAME



**BMAC3/GR BERKER**  
3 MODULE COVER  
FRAME



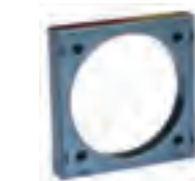
**BMAC1C/GR CBE**  
BERKER 1 MODULE  
CONVERTER  
FRAME



**BMAC2C/GR CBE**  
BERKER 2 MODULE  
CONVERTER  
FRAME



**BMAC3C/GR CBE**  
BERKER 3 MODULE  
CONVERTER  
FRAME



**BMAD/GR BERKER**  
GREY SPACER  
PLINTH



**BMADG/GR BERKER**  
SURFACE MOUNT  
BOX 1  
GANG



**BMAP/GR BERKER**  
FRAME WITH  
HINGED  
COVER



**BMP22B/GR BERKER UK**  
3PIN MAINS  
SOCKET  
GREY



**BMPUSB/GR BERKER**  
USB 5V 1A  
CHARGING  
SOCKET GREY (INPUT  
VOLTAGE 12V)



**BMAS50/GR BERKER**  
BACK PROTEC  
BOX  
50DIA X 40MM



**BMC12/GR BERKER**  
SINGLE ON OFF  
SWITCH  
+ LED



**BMC2N/GR BERKER**  
TWIN ON OFF  
SWITCH  
GREY



**BMCD/GR TWO WAY**  
SWITCH  
GREY



**BMCG5/GR BERKER**  
SINGLE SWITCH  
ELECTRIC  
STEP IN OFF  
OUT



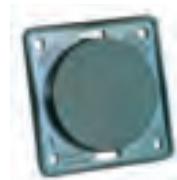
**BMCN/GR BERKER**  
SINGLE ON OFF  
SWITCH  
GREY



**BMCP/GR BERKER**  
PUSH BUTTON  
SWITCH  
GREY



**BMCR/GR BERKER**  
ELECTRONIC  
DIMMER  
SWITCH 12V 60 WATTS



**BMP/GR**  
BERKER GREY  
BLANKING  
PLATE



**BMP12A/GR BERKER**  
12V DC GREY  
AUTO  
SOCKET



**BMP12ATV/GR BERKER**  
12V CIG AUTO  
SOCKET  
+TV GREY ( F 75 Ohm)



**BMP12ATVS/GR**  
BERKER 12V CIG AUTO  
SOCKET +TV+SATL  
GREY ( F 75 Ohm)



**BMPRCE3/GR BERKER**  
RCA 3 DVD  
SOCKETS

## CBE MAINS 240V CONSUMER UNIT

A mains consumer unit is an important part of your electrical system. It protects your vehicle and occupants from electric shock hazards when connected to the site hook-up. No output plugs with unit requires DS120 plugset. The DS120-S is a RCD main switch with a double pole 13amp MCB to control and protect the various mains electrical items installed.



**DS120-S**

**DS120-S** Mains Consumer Unit ELCB, RCD & double pole 13A MCB

**DS120PLUGSET** Connecting plug set for output wiring.

## CBE SWITCH MODE BATTERY CHARGERS

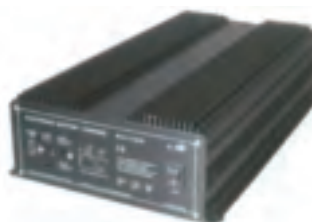
A2000 series

The high specification switch mode technology provides high performance and large charging outputs.

The "IUoU" charging line recharges the battery in three phases:

- 1) Maximum charge: at the maximum current, electronically moderated, reaches up to 14.4 V (25°C).
- 2) End of charge: at 14.4 V (25° C) continuous for a time of: 1h (Lead-acid), 6h 20' (Gel)
- 2) Maintenance: at 13.8 V (25° C) continuous, until the connection of a load.

A2000 models are equipped with a battery temperature sensor connection, which allows charger to adjust the output voltage and therefore, extend the battery's life.



**A2000** series switch mode battery chargers 18 > 35 amp 12v, with optional battery temperature sensor for charge control. **A2035** 35Amp , **A2018** 18 Amp,

**CSTB** Battery temperature sensor for A2000 series chargers.

WE NOW OFFER INSTALLATION AND SAFETY INSPECTION SERVICE BY [SupremeTech.co.uk](http://SupremeTech.co.uk)



0844 414 2324



0844 414 2425



# CBE ELECTRICAL EQUIPMENT



Electrical

## CBE MODULAR PLATES

For neat, simple & stylish installation of switches, mains outlet sockets, TV, satellite, 12 volt and other electrical accessories. The CBE modular plates system uses a **MAT** frame to install control module, and a **MAC** cornice to hide the fixings. Add colour code to end of MAC product code for coloured cornices. Standard **MAT** frame colour /G =DARK GREY RAL 7015



**MAC1NL/G** 1 MODULE CORNICE  
**MAT1NL/G** 1 MODULE FRAME



**MAC2NL/G** 2 MODULE CORNICE  
**MAT2NL/G** 2 MODULE FRAME



**MAC3NL/G** 3 MODULE CORNICE  
**MAT3NL/G** 3 MODULE FRAME



**MPUSB/G** 12V INPUT USB SOCKET



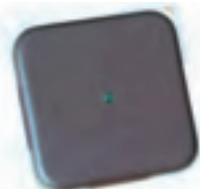
**MP22B/G** UK 3pin mains socket includes back box.



**MCN/G** Single on off switch 12V 240v If used with back box MAS..



**MC2N/G** Twin on off switch



**MC12P/G** Single on off switch with led indicator



**MCG5/G** Single momentary 3 way on-off-on switch.



**MC12N/G** Single on off switch with 12v LED indicator



**MCD1N/G** Single on off switch



**MCD2N/G** Twin on off switch



**MCGD5/G** Twin switch for electric step & awning light.



**MCD/G** Two way modular switch  
**MCP/G** Single push button modular switch.



**MTB/G** Battery level led test gauge 12v



**MCPL/G** Pump and lights control switch panel grey



**MCNF/G** Water heater mains element switch with 5A + spare fuse includes back box.



**MPF4/G** 4 blade fuse module



**MCB** Buzzer and LED module for step open warning circuit

These four modules can be combined to produce a main control panel of essential equipment for the smaller conversion.



**MP12ATV/G** 12 V auto socket + TV outlet ( 9,5 75 Ohm)  
**MP12ATVS/G** 12 V socket auto type + TV + satellite outlet ( F 75 Ohm) matching 12 V plugs see page 92



**MCR/G** Electronic dimmer switch 12v 3 amp for halogen lights or fans.



**MPRCA3TVS/G** 3 X RCA with Sat & TV connectors



**MPTV/G** TV OUTLET (9,5 75 Ohm) GREY  
**MPTVS/G** TV outlet + satellite outlet (F 75 Ohm) grey



**MP12/G** 12 VOLT DC DIN SOCKET  
**MP12TV/G** 12 V DIN socket + TV outlet ( 9,5 75 Ohm)  
**MP12TVS/G** 12 V DIN socket + TV + satellite outlet ( F 75 Ohm) matching 12 V plugs see page 92



**MP/G** Blank plate.



**MPRCA6/G** 6 x RCA connector for DVD and satellite installation.



**MP12AC/G** 12 V socket auto type with hinged cover.



**MP12A** 12 V socket auto type.

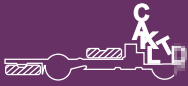


**MP12ACS** 12 V socket auto type with splash proof cover.

**MPEXBOXW** Flush fitting external one module box. Designed for any CBE modules to be installed Colour: white (see page 95)

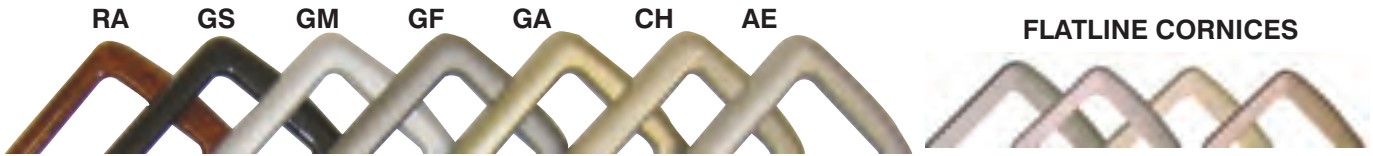
**WE NOW OFFER INSTALLATION AND SAFETY INSPECTION SERVICE BY [SupremeTech.co.uk](http://SupremeTech.co.uk)**





## CBE MODULAR PLATES

For neat, simple & stylish installation of switches, mains outlet sockets, TV, satellite, 12 volt and other electrical accessories. The modular plates system uses a MAT frame to install control module, and a MAC cornice to hide the fixings. The modules cannot be installed without the use of MAT frame and MAC cornice. Add colour code to end of MAC product code for coloured cornices. Standard MAT frame colour /G = DARK GREY see page 80.



1 MODULE CORNICE		2 MODULE CORNICE		3 MODULE CORNICE		FLATLINE CORNICES
<b>MAC1NL/AE</b>	Textured metallic silver	<b>MAC2NL/AE</b>	Textured Metallic Silver	<b>MAC3NL/AE</b>	Textured metallic silver	<b>FLATLINE CORNICES</b>
<b>MAC1NL/GH</b>	Champagne gloss	<b>MAC2NL/CH</b>	Champagne gloss	<b>MAC3NL/CH</b>	Champagne gloss	BS = NICKEL
<b>MAC1NL/GA</b>	Silversand satin RAL 9007	<b>MAC2NL/GA</b>	Silversand satin RAL 9007	<b>MAC3NL/GA</b>	Silversand satin RAL 9007	PE= SILVER
<b>MAC1NL/GF</b>	Iron grey matt	<b>MAC2NL/GF</b>	Iron grey matt	<b>MAC3NL/GF</b>	Iron grey matt	
<b>MAC1NL/GM</b>	Metallic light grey gloss	<b>MAC2NL/GM</b>	Metallic light grey gloss	<b>MAC3NL/GM</b>	Metallic light grey gloss	<b>MAC1-FL/BS or PE</b>
<b>MAC1NL/GS</b>	Metallic charcoal gloss	<b>MAC2NL/GS</b>	Metallic charcoal gloss	<b>MAC3NL/GS</b>	Metallic charcoal gloss	<b>MAC2-FL/BS or PE</b>
<b>MAC1NL/RA</b>	Walnut effect gloss	<b>MAC2NL/RA</b>	Walnut effect gloss	<b>MAC3NL/RA</b>	Walnut effect gloss	<b>MAC3-FL/BS or PE</b>



**MAS45** back box 45mm ø 48mm deep + cable grip  
**MAS50** back box 50mm ø 34mm deep + cable grip  
**MAD/G** 10mm Distance ring 60x60x10  
**MAC1P/G** single snap on frame 60x60mm for use with **MAD**  
**MAC2P/G** Twin snap on frame 113x60mm



**EA12RC2** TWO WAY REMOTE CONTROL BOX AND FOB 12V  
**MP22D/G** 230V SCHUKO CONTINENTAL SOCKET & COVER  
 TV F connector pack 10  
**MCAP5** 5mm cable  
**MCAP6** 6mm cable  
**MCAP7** 7mm cable  
**R550-UI** Panel mount 12v Input 5V 1A USB charger  
**R550-U** 12v Input Inline 5V 1A USB charger Cable L=1,5m



**R550-M** 5V 2A charger with multi-jack l=1,5m  
**R550-MU** 5V 2A mini USB charger l=1,5m  
**R555/2** Adapter 12V universal angled plug/ pin 2,1x5,5 (8A)  
**R555/8** Adapter 12V universal straight plug/ pin 2,1x5,5 (8A)  
**R417-R** Adapter 12V DIN plug / 12V cigarette lighter socket

**DLS-200 Dimmer - light brightness adjuster**  
 The light brightness adjuster DLS-200 is an electronic device which allows the brightness of the motorhome's internal lights to be varied (resistive incandescent, LED and halogen lights). It can be connected to one or more push buttons installed in the vehicle. By pressing once, lights can be switched on and off while continual pressing varies the light's brightness. The DLS-200 can manage up to 8 different light channels up to 200W maximum power.  
**Technical specs**  
 Power supply / nominal voltage: 12Vcc, Maximum power: 200W, Up to 8 dimmed light channels (parallelable), PWM (pulse-width modulation) outputs, Short-circuit and overheating protection, Dimensions (mm): 102 x 60 x 30 h, Weight: 100g.



**ETB3x5** Multi spade isolated distribution connector block. Provides 3way x 5 connectors  
 Earth terminal block Nickel plated brass  
**ETB4** Earth Block 4way  
**ETB8** Earth Block 8way  
**EHS5164** Heat shrink tubing 6.4mm un-shrunk black polyolefin Pack contains 5 x 1mtr lengths.

WE NOW OFFER INSTALLATION AND SAFETY INSPECTION SERVICE BY [SupremeTech.co.uk](http://SupremeTech.co.uk)



# CBE & ELECTRICAL ACCESSORIES



Electrical

## SOLAR CHARGE REGULATORS

Developed to control the charging of 12v batteries by Photovoltaic (solar) panels. They are produced with built in diodes to aid easy connection. Built in charge and warning LED's depending on model. The **SPRS240** is designed to connect to the optional digital charge amps and battery state voltage test panel **PT542**. All regulators are 12 volt, control in series with Mosfet, built in Schottky diode, and reverse polarity protected. Final charge regulation 14.4 / 13.8 volts.

Model	SPRS110	SPRS240
Continuous power draw	0,01 mA @ 12 V	0,01 mA @ 12 V
Maximum connected wattage	110 W	2 x 120 W
Max Voltage	14.1	14.3 Gel 14.1 Lead Acid
Maintenance voltage	13.5	13.8 Gel 13.5 Lead Acid
Reverse polarity protection	YES	YES
Internal fuse	NO	20 A
Ready to connect PT542	NO	YES
No of panels connectable	ONE	TWO
Battery type selector	NO	YES
Dimensions ( mm )	115x90xH37	115x90xH37



SPRS240

SPRS120

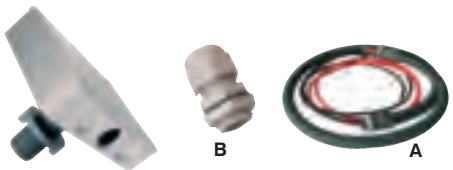


**PT542** test panel to check solar panel performance, charging amps and battery voltage. Connects to **SPRS240**. Cable length 1.5M. Panel colour grey, size 60x60mm. ALSO FITS INTO CBE MODULAR PLATES



### PHOTOVOLTAIC SOLAR PANELS ONLY. (SPW...)

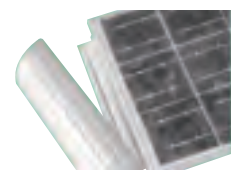
High specification solar panels, latest technology for the highest efficiency, give a charge output even in low light overcast periods. Anodised Aluminium outer panel frame. We have a selection of panel sizes and wattage's available. See Price list for more information



SPKT5 through roof waterproof cable connection with up to six entries. Allows additional wires from reversing camera or TV / satellite cables in addition to two solar panels. Choice of solar panel cables before connect to it. Or use SPKT5RP to connect other cables.  
**SPKT5C10** 2M OF 6mm2 CABLE WITH 1M OF FLEXIBLE CONDUIT  
**SPKT5C20** 3M OF 6mm2 CABLE WITH 2M OF FLEXIBLE CONDUIT  
**SPKT5RP** CABLE GLAND FOR SPKT5

### FIXING SUPPORT FOR SOLAR PANELS

Anodised aluminium fixing brackets with aerodynamic over covers. Allows panel installation on any surface. Designed for campers with easy installation by Sikaflex Adhesive sealant and stainless safety screws. See Price list for order codes (**SPSA...**) and panel dimensions.



### SOLAR PANELS WITH REGULATOR AND INSTALLATION KIT

First quality Mono crystalline solar panels, offering high energy performance. Panels are supplied with aerodynamic end fixing profiles. Profiles are grooved to allow direct bonding with the supplied adhesive kit. Pre mounted and prewired with UV resistant 2 x 4mm2 cable 8 m long. Water tight Aerodynamic cable entry glands Included. Supplied with regulator and tube of adhesive for 2 panels. Packed in sets of 2 panels

- 75 watts L 1192 x W 541 x H 47
- 100 watts L 1390 x W 600 x H 47
- 120 watts L 1455 x W 670 x H 47
- 150 watts L 1680 x W 670 x H 47

- SPWKIT752** 2 x 75w panels kit
- SPWKIT1002** 2 x 100w panels kit
- SPWKIT1202** 2 x 120w panels kit
- SPWKIT1502** 2 x 150w panels kit



**CAK Battery Charge Manager BCM12.** Automatic charge switching device allows charging of the vehicle starting battery once the auxiliary battery is charged by hook-up charger or solar panel. Charge rate 0.1 to 4 A max. Allows better use of wasted solar panel charge by directing it to a second battery prevents flattening of start battery from having cab equipment running. LED illuminates to confirm unit has switched to charge. Size 80x50xD50mm



### DC TO DC VOLTAGE CONVERTERS, 24 VDC TO 12 VDC

The PowerVerter range of switch mode voltage converters offers a convenient & reliable way to install 12Vdc equipment on 24Vdc on vehicles, vessels & aircraft. Switch Mode technology enables high efficiency (up to 93%) ensuring low heat dissipation. Compact, light weight, rugged & splash proof - sealed to IP53. Click & fit three point mounting bracket ensures quick & secure installation. Red output LED indicates correct operation & eases fault finding. Inherent reliability, CE & E marked. Surface mount technology (SMT) based assembly techniques assure resistance against shock & vibration. Recessed push-on terminals reduce the risk of lost connections due to vibration. Conservatively rated and suitable for mounting in confined spaces without over heating. Full circuit protection (transient, overheat, overload & catastrophic failure). Meets the VIDG5/AES specification for use on emergency services vehicles.

- PV3** Continuous load 3 Amp Intermittent Load 6 Amp
- PV6** Continuous load 6 Amp Intermittent Load 10 Amp

DDC241220



DDC241240



### Dometic Perfect Power DCDC20 & DCDC40

Voltage converters suitable for sensitive applications. Ideal for larger motorhomes with 24 volt starter battery and 12 volt Leisure battery. Suitable for split charging with IU battery charging curve. Electrically isolated & clean output voltage. To increase capacity parallel operation of several converters is possible, additional ON/OFF input, stabilises the battery / generator voltage.

- DDC241220** 20 amp 24 volts to 12 volts
- DDC241240** 40 amp 24 volts to 12 volts

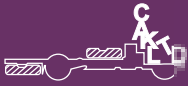


PV6

	DCDC20	DCDC40
Nominal input voltage	24 volts DC	24 volts DC
Input voltage range	20 to 32 volts DC	20 to 32 volts DC
Output current	20 A	40 A
Output voltage	13.8 ±0.1 volts	13.8 ±0.1 volts
Energy efficiency	87%	87%
Ripple & Noise	20 mA	20 mA
Dimensions (W x H x D)	115 x 70 x 140mm	115 x 70 x 240mm
Weight	1.0 kg	1.9 kg
Test mark	e-approved to Automotive EMC Directive	

WE NOW OFFER INSTALLATION AND REPAIR SERVICE BY [SupremeTech.co.uk](http://SupremeTech.co.uk)





# CBE CONTROL PANELS & WATER LEVEL INDICATORS



**Volts**

**PT532** Digital battery voltage gauge. Microprocessor controlled displays voltage from battery 1 and 2 on digital display. Panel colour grey, size 60x60mm.



**°C**

**PT538** Digital internal and external temperature gauge. Microprocessor controlled, complete with sensors, sensor cable length: internal 0.5m, external 3m. Colour grey, size 60x60mm.



**Volts/amps**

**PT552** Digital battery voltage and consumption gauge. Provides a reading for battery voltage and displays battery consumption or charge in amps on the range of -130 to + 130 Amps. Complete with shunt and 5m of cable. Panel colour grey, size 60x60mm.

## C.A.K. WATER CHECK™ (PICTURE A)

Water check™ side mounted level switch kit with remote indicator light panel. Provides high (waste) or low (fresh) level warning. We can fit sensor to new build tanks at time of production, or simple diy retro-fit to existing plastic or metal tanks. Not suitable for use in toilet tanks. Can be used on 12 or 24 volt systems. New version now fits CBE modular plates range see page 88-89.

- WLIF** 12V / 24V Fresh water check™ 1/4 full indicator light
- WLIW** 12V / 24V Waste water check™ 3/4 full indicator light
- MPWLIW** 12V / 24V Fresh water check™ 1/4 full indicator light Modular plate
- MPWLIW** 12V / 24V Waste water check™ 3/4 full indicator light Modular plate
- WLIS** Spare tank sensor for above kits
- WLISB** Spare indicator light for above kits

## C.A.K. LEVEL CHECK™ (PICTURE B)

The C.A.K. Level check™ multi level indicator™. Side mounted contacts provide indication of 5 levels to panel display. Will fit similar panel cutout to replace older gauges with needle displays. we can install stainless contacts on new build tanks, otherwise both versions are easily retrofitted to existing plastic tanks. Not to be fitted in metal tanks

- LCF** 12V Fresh level check™ multi level indicator kit (12 volt only)

## C.A.K. FILL CHECK™ (PICTURE C)

The C.A.K. fillcheck™ multi level indicator™ has been developed to provide a visible indication of two levels. Panel has push test button, green OK light and amber and red level warning lights. Provides high level warnings suitable for waste and toilet holding tanks and certain chemicals. Stainless contacts can be installed to suit required warning levels. Not to be fitted in metal tanks.

- FCLIW** 12V Fill check™ twin level indicator (12 volt only)

## CBE ELECTRONICS WATER AND WASTE LEVEL GAUGES

Designed to match the CBE electronics range of modular plates and control panels (see pages 86-88), the gauges are of a high quality and specification.

### CBE DIGITAL WATER AND WASTE LEVEL GAUGE

**PT522** digital water level gauge, microprocessor controlled showing levels of fresh and waste tank as a % on digital read out. The two **SPE/...** Electronic tank sensors must be ordered separately depending on depth of the fresh and waste water tanks. The unit can be operated with only one **SPE/...** sensor if you only have one of the tanks, the second sensor can be added with the other tank later. **SPE/...** sensor cannot be cut down to size, as this will damage the special coating on the sensor, preventing it functioning correctly. The **SPE/...** sensors are installed into the top surface of the tank. Length of sensor connecting cables 4mtr, Panel colour grey, Overall size 143x78mm. Not for fitting in metal tanks. (12 volt only)

- PT522** CBE digital water and waste level gauge 12 volt
- SPE/100** 100mm electronic tank sensor
- SPE/160** 160mm electronic tank sensor
- SPE/200** 200mm electronic tank sensor
- SPE/250** 250mm electronic tank sensor
- SPE/300** 300mm electronic tank sensor
- SPE/330** 330mm electronic tank sensor
- SPE/400** 400mm electronic tank sensor
- SPE/440** 440mm electronic tank sensor

### CBE COMBINED FRESH AND WASTE WATER TANK GAUGE

**MT214/G** twin water gauge provides fresh & waste levels with LED display. A single red LED warns of the waste tank filling up and four different coloured LED's identify 4 levels in the fresh tank. The gauge comes complete with 4 metres of cable, a pair of stud sensors for the waste tank and a SP5/40 fresh water tank sensor this sensor can be shortened to suit tank depth. Fresh sensor is OK for use in metal tanks. Waste studs not to be fitted in metal tanks (12 volt DC only). Panel colour grey matches up to CBE modular plates system (Page 88-89)

- MT214/G** CBE combined led fresh and waste tank gauge

### CBE INDIVIDUAL FRESH WATER TANK GAUGE

**MTT/G** water gauge provides fresh levels with LED display. Four different coloured LED's identify 4 levels in the fresh tank. The gauge comes complete with 4 metres of cable and a SP5/40 water tank sensor this sensor can be shortened to suit tank depth. OK for fitting in metal tanks (12 volt DC only). Panel colour grey matches up to CBE modular plates system (Page 88 - 89)

- MTT/G** CBE individual LED fresh tank gauge

### CBE INDIVIDUAL WASTE WATER TANK GAUGE

**MTTR/G** water gauge provides waste levels with LED display. Four different coloured LED's identify 4 levels in the waste tank. The gauge comes complete with 4 metres of cable and a SP5/40 water tank sensor this sensor can be shortened to suit tank depth. OK for fitting in metal tanks (12 volt DC only). Panel colour grey matches up to CBE modular plates system (Page 88 - 89)

- MTTR/G** CBE individual LED waste tank gauge

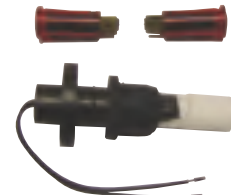
### NEW WATER LEAK ALARM - WLA3

Place the 3 sensors in areas of possible water leakage and wire back to control unit. If a water leak is detected alarm will sound and unit will switch off the pump to prevent further damage. Minimal power consumption 0.01mA 12v

**WE NOW OFFER INSTALLATION SERVICE IN KENILWORTH BY [SupremeTech.co.uk](http://SupremeTech.co.uk)**



**A**



**B**



**C**



**PT522**



**MT214/G**



**MTTG**



**MTTR G**



**WLA3**

**Electrical**



**0844 414 2324**



**0844 414 2425**



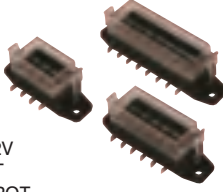
# ELECTRICAL ACCESSORIES



Electrical

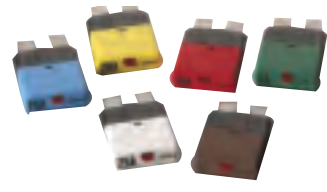


Fits 20mm hole 10A@12V  
**MRS132RD** RED SPOT  
**MRS411AM** AMBER SPOT  
**MRS412BL** BLUE SPOT  
**MRS413GR** RED SPOT



**FUSE BOXES** Neat range of multi way blade fuse blocks supplied empty. Full range of blade fuses available see below for codes.  
**BFH2** 2 way  
**BFH4** 4 way  
**BFH6** 6 way  
**BFH8** 8 way  
**BFH10** 10 way  
**BFH12** 12 way

## RESETTABLE BLADE FUSE TRIPS



Miniaturised single pole circuit breaker designed to replace normal automotive blade fuses. Reset button pops up showing clearly which circuit has a fault, simply press-to-reset. Ratings are 6, 8, 10, 15, 20 and 25 amps.  
**BFRST6,8,10,15,20,25**



**R450** 50 amp battery fuse  
**R450FUSE** Spare 50 amp fuse link



**R421** Encased fuseholder with 10A blade fuse (max 25A)



**R420** Inline blade fuseholder with 10A blade fuse (max 25A)



**R420-S** Wired inline blade fuse holder with cap & 10A blade fuse



12 V straight DIN plug  
**R412** Standard DIN Plug  
**R412N** Economy DIN Plug



**R419L** 12 V straight universal Cigarette & DIN plug built in 8A fuse + led indicator



**R419F** 12 V straight universal Cigarette & DIN plug built in 5A fuse



**R419/90** 12 V 90 degree universal Cigarette & DIN plug built in led indicator



**EAD11** Universal Cigarette & DIN plug with built in On-Off switch and 8A fuse. For 12 or 24v use



**R513** 12 V wall surface mount DIN socket with cover



**R512** Thru wall DIN socket with back nut and cover 16A@12V



**R532** Triple recessed wall mounted DIN socket set.



**R511/V** Inline DIN socket



**EAD403** Edison 2-Pin D.C. plug. 2 flat pins one wider than the other fits most caravans. Similar to Clipsal type plug.



**R712** Recessed auto socket 10A



**R713** Recessed or surface mounted auto socket. The recessed module is clipped inside the surface box. Easily separated.



**R510/2** Inline Auto socket with 1.8mtr cable



**R417** Adaptor 12v DIN plug / 12v auto socket



**EAD122** Twin surface mounted auto sockets with water resistant covers



**EAD510** Inline auto socket



**R409/R** Adapter for 7 pins plug / 13 pins socket



**R410/R** Adapter 13pins plug / 7 pins socket



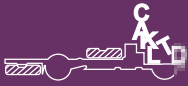
**EBCC25** Battery crocodile clip 25 Amp with nut & screw connection



**BLF....** 5 pack of blade fuses 30, 25, 20, 15, 10 & 7.5 amp

WE NOW OFFER INSTALLATION AND SAFETY INSPECTION SERVICE BY [SupremeTech.co.uk](http://SupremeTech.co.uk)





# WIRING & ELECTRICAL ACCESSORIES



Electrical

## ELECTRICAL CABLE

Flexible multi-stranded single core PVC auto cable. Manufactured to BS6862 part 1 1971. Suitable up to temperatures of 70oC. Resistant to petrol, diesel, lubricating oils & diluted acids. Amps are the continuous current rating of cable.

### SINGLE CORE

Code	Colour	X section	Amps	Conductor Spec	Qty m
EC105K	BLACK	0.65mm <sup>2</sup>	5	9/0.30mm	50
EC105R	RED	0.65mm <sup>2</sup>	5	9/0.30mm	50
EC108K	BLACK	1.0mm <sup>2</sup>	8	14/0.30mm	50
EC108R	RED	1.0mm <sup>2</sup>	8	14/0.30mm	50
EC112K	BLACK	1.5mm <sup>2</sup>	12	21/0.30mm	50
EC112R	RED	1.5mm <sup>2</sup>	12	21/0.30mm	50
EC117K	BLACK	2.0mm <sup>2</sup>	17	28/0.30mm	50
EC117R	RED	2.0mm <sup>2</sup>	17	28/0.30mm	50
EC128K	BLACK	3.0mm <sup>2</sup>	28	44/0.30mm	30
EC128R	RED	3.0mm <sup>2</sup>	28	44/0.30mm	30
EC135K	BLACK	4.5mm <sup>2</sup>	35	65/0.30mm	30
EC135R	RED	4.5mm <sup>2</sup>	35	65/0.30mm	30

SPEAKER CABLE TWIN CORE IN FIGURE OF 8 CROSS SECTION

<b>EC210SPK</b>	BK/BKW	FIG 8	2.5	2 x 13/0.20mm	30
-----------------	--------	-------	-----	---------------	----



### TWIN CORE FLAT CABLE

Flat twin core cable easily splits into single cores. Add **PM** to end of code to buy cable by the metre.

<b>ECT21</b>	RD/BK	2 X 1 mm <sup>2</sup>	8	2.5X5mm	100
<b>ECT22</b>	RD/BK	2 X 2 mm <sup>2</sup>	17	3.5X7mm	100

### EXTRA FLEXIBLE BATTERY CABLE

Easier to use due to enhanced flexibility and recommended for marine use. Cable cross sectional area of core 20mm<sup>2</sup>, load rating 135 amps. Add **PM** to end of code to buy cable by the metre.

<b>EBC135K</b>	BLACK	20mm <sup>2</sup>	135	266/0.30mm	30m
<b>EBC135R</b>	RED	20mm <sup>2</sup>	135	266/0.30mm	30m



**EPVCTBLK** Black  
**EPVCTRED** Red  
**EPVCTYLG** Yellow / Green



**EWST150** Wire stripping pliers 150mm



**EWCRPL** Crimping pliers 250mm



ECT... various crimp terminals

SEE PRICE LIST FOR DESCRIPTION



**EAD01** Croc clips and lighter type socket.



**EAD02** Lighter socket twin cable splitter



**EAD03** 12V Triple Socket Silver 10A fuse & LED



**EAD04** Lighter socket curly cord 10' 2.5m extension 5A



**EAD09** Double socket with 90 deg swivel plug & LED

### Low Voltage Protector



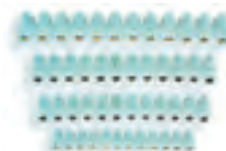
**EAD06** Battery saver. Will turn off accessory when battery falls below 11.6v 10A fuse & swivel plug.



**EAD07** 12V Input voltage converter. Regulated Output 800mA DC 1.5,3,4, .5, 6,7,5,9,12V Inc 6 plug adaptors



**EAD08** Triple socket 10A with swivel plug. Will allow use of Original Cigar lighter plug in the adaptor.



**TERMINAL STRIPS**  
**ECTS3** 3 AMP  
**ECTS6** 6 AMP  
**ECTS10** 10 AMP  
**ECTS15** 15 AMP  
**ECTS30** 30 AMP



**EAD23012** 230 volt to 12 volt converter 0.5 Amp @12volt. Ideal to power or charge 12v equipment at home



**EADTRKCHG** Compact 500mA constant output plug-in charger. Suitable for most 12v automotive batteries. Fitted with crocodile clips & 1.6m cables.



**EDIMM** Digital Multimeter DC & AC voltage, DC current & resistance, continuity, diodes, NPN & PNP. Supplied earth & test leads and 9v battery. Large digital display for easy readings



**VOSC612** 12V Oscillating 6" fan is a high performance model designed for use just about anywhere. Powerful yet quiet motor; smooth switch able oscillating action & full chromed metal mesh front and plastic rear cage for safety. Screw-mounted will plug into any 12V lighter socket.



**IRNO1** Mini travel iron 12v 5A. Built in thermostat with rotary temperature control. Folding handle for compact storage. Cable (1-2m) with cigarette lighter plug.



**HDY01** 12 volt hairdryer with folding handle for compact storage. With 2m of cable & cigarette lighter plug. Current consumption 180 watts.

WE NOW OFFER INSTALLATION AND REPAIR SERVICE BY [SupremeTech.co.uk](http://SupremeTech.co.uk)



0844 414 2324



0844 414 2425



# INVERTERS, AGM BATTERIES & ACCESSORIES



Electrical



**R331** Pair of battery terminal connectors with protection covers



**RBATQC** Battery snap on quick connectors.



**R294** Master battery isolator switch 100Amp or 500Amp for 10 sec's.  
**R294C** Spare key for R294 above



**R295** Master battery isolator switch 150Amp or 1200Amp for 5 sec's.  
**R295C** Spare key for R295 above



**R228** Relay 70A for linking batteries for split charging & running fridge 12V feed from engine.



5 pin change over relay  
**R220CH** 12v 20/30amp  
**R240CH** 24v 10/20amp



**R224** 24V Relay 20A for linking batteries, switching high loads or split charging feed from engine.



**R225** 24V Heavy Duty Relay 50 amp 4 pin relay for very high power switching needs.



**R230** Relay 12V 30 amp smaller capacity 4 pin relay for lower power switching needs



**R230F** Relay 12V 30 amp 4 pin with built in 30Amp blade fuse

## NEW SOLVER BATTERY MAINTENANCE SYSTEM



Solver is an electronic device that eliminates the sulphation of lead batteries. Providing longer life, enhanced performance & more power from your batteries. See our website for more information on this excellent energy saving device.

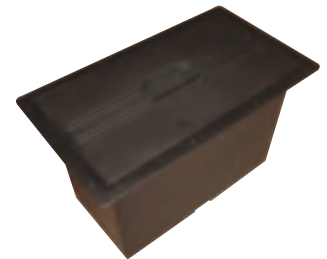
**BSO121** SOLVER BATTERY MAINTENANCE SYSTEM 12V 120Ah



**CSB40-SP** Automatic battery separator relay with 3 fused 12 volt equipment outputs



**R232T** Twin on off Relay 2 x 12V 30 amp relays in one casing



## THRU FLOOR BATTERY BOX

Complete with lid and battery retaining strap. Max battery size 375mm long x 175mm wide x 240mm high. Floor cutout 400 x 200 approx, Flange size 475 x 275.

## SEALED AGM (Absorbed Glass Mat) HIGH QUALITY BATTERIES

High Quality Units by Banner Batteries Made in Austria for reliability Sealed AGM: (Absorbed Glass Mat) originally developed for military aircraft where power, weight, safety and reliability were paramount considerations. Faster Recharge, Sealed, Totally Maintenance Free, Much better charge retention deep cycle battery. Higher resistance to vibration Higher bulk charge acceptance rate (which means up to a 15% shorter recharge time and reduced cost). Can be used in saltwater applications.

Using a VRLA sealed AGM battery is recommended inside a semi-enclosed area, like the passenger compartment, as it is safer than a wet battery being spill, leak proof, non gassing & can be mounted in virtually any position even on its side! (because it is totally sealed and maintenance free). In most cases AGM batteries will give longer service life & greater cycle life than a wet cell battery. They have particularly low self discharge rate (typically 1%-2% per month) so that they will not go flat during long periods without charge. Our Premium BANNER AGM range of batteries are perfect for Caravans, Motorhomes, Horseboxes, Boats & Specialist Vehicles. 3 year warranty. **THIS PRODUCT CAN BE SENT BY CARRIER**

STOCK CODE	L X W X H	Ah (20Hr rate)	Ah (100Hr rate)	Terminal Type	Terminal Thread	Weight
BTAGM070B	278x175x190	75	85	POST	-	22
BTAGM080B	315x175x190	80	90	POST	-	25
BTAGM100B	354x175x190	92	110	POST	-	28
BTAGM110B	328x172x222	110	122	F12	FM6	32
BTAGM135B	340x173x280	135	145	F12	FM6	40
BTAGM150B	482x170x242	150	165	F12	FM6	44
BTAGM065	345x165x175	65	75	F11	FM8	19

The Platinum BTAGM065 is specially sized to fit under the Ducato X250 front seat Terminal conversion posts are available. They simply crew into the FM8 thread to provide a conventional round Auto battery post if that is required.

**BTAPOSTM8** Battery post kit M8 **BTAPOSTM6** Battery post kit M6

## INVERTERS

12v Modified Sine Wave Mains Inverter provides portable mains power on the move. The unit plugs simply into your cigar socket in your car, boat or caravan, providing 240v mains electricity. Input voltage 10.5-15v, Low battery alarm and auto shut down, output 230v 50 Hz with standard UK 3 pin socket and built in on/off switch. Over temperature protection, Short circuit protection & overload protection.

- INV24060** 24 volt 540 watts continuous output
- INV12070** 700 watts continuous output
- INV12100** 1000 watts continuous output
- INV12200** 2000 watts continuous output



## PREMIUM QUALITY BANNER ENERGY BULL LEISURE BATTERIES.

Premium semi-traction thick plate lead acid leisure batteries with true capacities, backfire & spill protected. O.E.M Quality. (Ah 20h/100h rating)

- BTEBL075** 75/85ah L256 x W174x H225
- BTEBL080** 80/90ah L278 x W175x H190
- BTEBL100** 100/110ah L354 x W175x H190
- BTEBL115** 115/135ah L350 x W175x H230
- BTEBL130** 130/140ah L514 x W189x H220

**COLLECT ONLY**



**BTEBL080**



**BTAGM070B**

**RBATTFB** THRU FLOOR BATTERY BOX

## STANDARD QUALITY VOYAGER 'WET' LEISURE BATTERIES

Made by Banner for use in leisure applications with mains hook up.

**COLLECT ONLY**

**BTVOY075** 55ah @20h (75ah @ 100h) L272 x W172x H220

**BTVOY110** 90ah @20h (110ah @ 100h) L344 x W172x H235



**BTVOY075**

## IN-CAR INVERTER

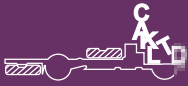
Equips vehicle with three pin power socket to provide portable mains power on the move. Overload, short circuit, over voltage & over temperature protection. Low voltage shutdown feature. Power your laptop, mobile phone, DVD player, games console and most small appliances.

**INV12016** 200W Plug in Inverter 140 watts continuous output



WE NOW OFFER INSTALLATION SERVICE IN KENILWORTH BY [SupremeTech.co.uk](http://SupremeTech.co.uk)





# MAINS ELECTRICS & CONNECTORS



**MCLP** Loose Blue CEE mains connection plug male



**MCLS** Loose Blue CEE mains connection female Socket with hinged cover



**MCLUK** UK adaptor female socket



**MCLE** Continental adaptor female socket



Mains input lead with connectors.  
**ML10** 10 Metre



**EPOLTEST** Polarity tester safety checks correct wiring of hook up supply



**MLUKSKT** Converter blue 16A to UK 3 PIN household socket



**MISURF** Mains inlet surface mount blue 16A



**MLHMWS** Home mains wall mounted blue 16a socket



**MLSP3** Mains lead splitter Blue 16A



**MLSP2UK** Mains lead splitter Blue 16A + UK 3 pin household socket



**MLSP2CAB** Mains lead splitter blue 16A with 2mtrs of inlet cable



**MLERL** empty cable reel.  
REEL CAPACITY  
50mt - 3x1.5mm<sup>2</sup>  
40mt - 3x2.5mm<sup>2</sup>  
30mt - 3x2.5mm<sup>2</sup> H DUTY



Flush fit external mains inlet socket with profiled lid.  
**MIFFB** colour black,  
**MIFFW** colour white.



Mains inlet socket styled to match F30/1 water filler (page 17). Sizes 137mm High x 122mm Wide. Cut out oval 90mm H x 85mm W.  
**MIF30** White mains inlet  
**MIF31** Black mains inlet



**MPEXBOXW** Flush fitting external one module box. Designed for any CBE modules to be installed  
Size 125mm W x 140mm H overall Colour: white  
**MOUTW** Flush fitted mains



outlet socket for 3 pin UK 13 amp plug Size 125mm W x 140mm H overall Colour: white



**MLTDY**  
Simple frame to wind on mains cable for storage



**MCLSKT** Converter lead blue 16A plug to UK 3 PIN household socket



**MLILRCD** In Line 16 amp mobile RCD  
Ideal for tenting or garden power products, Wired between the appliance & mains plug, Reset & test light facility, Trip speed: 30mS. Can be used in damp & wet conditions



**MCU2516** Mains consumer unit fitted with a 25 A / 30mA RCCB residual current device and 2 MCB's 1 x 6 amp 1 x 10 amp.  
Dimensions 200 x 112 x 90mm

## SOME GUIDANCE ON DESIGNING YOUR MAINS & 12 VOLT ELECTRICAL SYSTEM

The electrical system is a very important part of your conversion. It is important to ensure it is installed in a correct manner by a competent person and inspected for safety regularly.

### MAINS ELECTRICITY

To use mains 220-240volt electric's "site hook-up" in your vehicle you will need to obtain and install the following items. To connect between the site electric's post and your vehicle you will need a 10 Metre mains input lead with blue CE connectors (**ML10**). If you are in Europe some sites will have a different plug so you will need the Continental adaptor (**MCLE**). To plug in your vehicle at home either to top up the battery or chill down the fridge you will need a UK adaptor (**MCLUK**) to plug into a domestic 3-pin socket. To connect the mains input lead into your vehicle you need a flush fit external mains inlet socket with lid (**MIFFB** colour black, **MIFFW** colour white) this is fitted through the sidewall of your vehicle in a suitable place. You connect this with 3 core cable to the Mains Consumer Unit (**DS120-S** or **MCU2516**) which provides the safety of the RCD (Residual Current Device), ELCB (Earth Leakage Circuit Breaker) main switch and double pole MCB (Miniature Circuit Breakers) to protect the mains electrical circuits in your vehicle, i.e. fridge, charger, 13amp sockets etc. The Consumer Unit, which is normally fitted in the base of the wardrobe or bedbox, must be earthed to the chassis to provide the correct protection. The connection to the Battery charger is the link between the mains and the 12-volt system.

### 12 VOLT ELECTRIC'S

Your 12 volt system is the heart of the vehicles conversion. You will have the vehicles existing battery "AUTO or B1" used to start the engine. It is best not to connect any items for the conversion to this battery. If you drain down this battery you will be unable to start your engine and therefore charge up your battery. You need to start by installing a second battery "leisure or B2" this can be one battery 75-110 A/hr or for bigger electrical needs a pair of 110 A/hr batteries in parallel, connect positive to positive and negative to negative. By joining them this way you double up the batteries capacity 2 x 110 but retain the voltage at 12 volt (If you join them in series positive to negative you will get 24 Volts!). You will "split charge" your leisure battery by connecting a relay (**R228**) between B1 and B2 & the relay signal wire to the D+ terminal on your alternator. When the engine is started & the alternator is charging, the leisure (B2) battery will be charged up via the relay. The main 12 volt system needs to be monitored and controlled from a control panel and distribution system (**PC100** or **PC200**). The system has control switches and built in circuit protection fuses to protect key equipment. All items and their cable runs MUST BE FUSED to the correct rating. Additional fused circuits can be provided using the blade fuse holders (**BFH4, 6, 8 & R420/421**). This system also has a charger to charge the leisure battery from the mains 240v connection. (See above) To ensure the auto battery remains topped up when stationary for long periods or using cab fitted equipment i.e. radio, DVD, NAV Monitor, use a CAK Battery Charge Manager (**BCM12**) which trickle charges excess charge from the leisure battery back to the auto battery when the leisure battery is being charged.

WE NOW OFFER INSTALLATION AND SAFETY INSPECTION SERVICE BY [SupremeTech.co.uk](http://SupremeTech.co.uk)



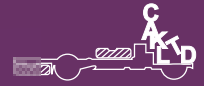
0844 414 2324



0844 414 2425



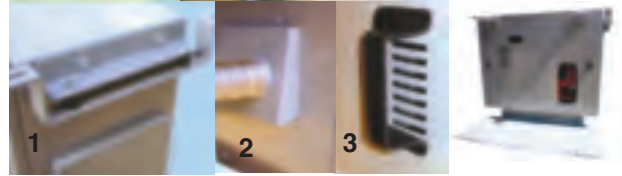
# GENERATORS



Electrical

## TOP ENERGY BUILT IN OPERATING LOCKER FOR HONDA EU10i & EU20i GENERATORS

- Secure storage
- No need to remove generator to operate
- Ultra quiet operation
- Ease of access
- 50% the cost of a built in generator & less than 50% of the weight also
- Easy for you to remove if it is needed away from the installation.
- Can be used for other storage when generator not on board.
- Unique patented design



**Top Energy** is designed exclusively for the reliable **Honda EU10i & EU20i** generator range. Casing is produced from powder coated galvanized steel for good corrosion resistance has openings located for cooling and access to controls for operating the generator. The **Top Energy** casing bolts to the floor with anti vibration mounting brackets (1), this can be mounted to the chassis with optional brackets though. The casing interior is lined with noise absorbing foam to make these quiet generators even quieter. The generator is located in a base tray that slides out on ball bearing draw slides attached to this tray is the casing door. The casing door is retained by two screw locks with removable key for security. The front of the casing has a hinged multi adjustable mounting frame to attach the section of side skirt cut out to fit the **Top Energy**.

The supplied rubber profile is bonded to the edge of this section of side skirt to give a neat finish when the skirt door is closed. This is finished off by the installation of two suitable locks (**LDL1036**) (An aluminium reinforcing profile to aid fitting the locks can also be supplied if required) to secure this outer door making the generator even more secure. The exhaust fumes are ducted away with the supplied metal piping (2) further reducing noise while allowing the generator to be operated while traveling. We recommend the addition of the Vent Wind Deflector (3) produced in tough plastic it allows the airflow to draw through the casing allowing the **Top Energy** generator to be operated while on the move.

	TOP ENERGY 10	TOP ENERGY 20
- Order code:	GENTE10	GENTE20
- Dimensions LxWxH	500x265X400	560x320x445
- Noise Output @ 7 mt:	LpA=43 dB (A)	LpA=46 dB (A)
- Weight:	Kg 36	Kg 46



### Optional items

- GENTEFS OPTIONAL FUEL STORE FOR TOP ENERGY
- GENVWD VENT WIND DEFLECTOR FOR TOP ENERGY

### HONDA PORTABLE GENERATORS

• Honda Inverter Technology ideally suited for use with sensitive electronics due to a clean sine wave of energy that prevents surging. • Honda Oil Alert system will shut the unit off when the oil drops below a safe operating level. • DC terminal for charging 12-volt automotive type batteries (requires additional lead). • The Honda EU range is the best choice for stable power whether for the caravan, motorhome, boat or standby power during power cuts. Honda 5 year Warranty. Produce only 59dB of sound at 7 meters with a full load, which is less than the rating of common speech. The Honda **EU10i** small super quiet Honda generator is extremely portable (at only 29 lbs / 13Kgs.) as well as fuel efficient. Will run for up to 8.3 hours on a single tank of fuel, when used with the Honda Eco Throttle feature. At only 46.3 lbs (21 kg), the Honda **EU20i** generator utilizes Honda's "state of the art" inverter technology to provide 2000 watts of lightweight, quiet and efficient power. It will run up to 10 hours on a single tank of fuel when used with Honda's Eco Throttle feature.

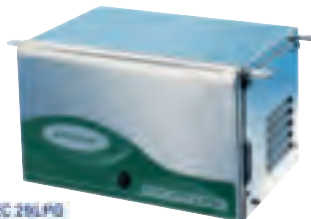
- GHEU10i** Honda EU10i Portable Generator 1Kva
- GHEU20i** Honda EU20i Portable Generator 2Kva

### DOMETIC INTEGRATED GENERATORS

We offer the full range of generators and accessories please ask for any Dometic item not in our catalogue.

#### Dometic TEC 29

The top seller in the range! Super-compact dimensions, light weight of just 44 kg and, with its 2600-watt capacity, just as powerful as conventional predecessor models. Petrol-fuelled engine, modest energy consumption, very quiet running. Suitable as a power source for all Dometic air conditioners.



Dometic TEC 29LPG

#### Dometic TEC 29LPG

The tried and tested TEC 29 is now also available as a gas model. The same benefits, same performance, minimal noise and odour emissions, extremely high efficiency.

#### Dometic TEC 40D

This low-noise diesel generator is new in the camping / caravan range and has already proved itself to be highly reliable in tough everyday use. It can get something going with 3500 watt continuous output using very little fuel. That is also enough to run two Dometic motorhome air conditioners at the same time.



Dometic TEC 40D

#### Dometic TEC 30EV

Environment-friendly with diesel fuel, and the most economical generator in the range with a fuel consumption of 0.7 litres per hour. Purpose-designed for use in larger motorhomes and utility vehicles. Low-noise operation thanks to excellent sound insulation. Suitable as a power source for all Dometic air conditioners.



Dometic TEC 30EV

#### Dometic T2500H

Favourably priced, reliable appliance. Compact design, light weight. Low-noise, high-performance petrol engine [ 5.5 HP ], economical consumption. 2000 watts continuous output – enough to supply several electrical appliances at the same time, or Dometic air conditioners of matching power rating.



Dometic T 2500H

#### Dometic T4000H

A genuine mobile power station! Generous 3500-watt continuous output – plenty of power for two Dometic motorhome air conditioners. Tried and tested unit with high-performance petrol engine [ 9.0 HP ].

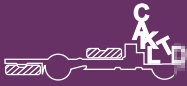


Dometic T 4000H

**MUST BE INSTALLED BY A QUALIFIED FITTER IN CONSULTATION WITH DOMETIC**

**WE NOW OFFER INSTALLATION SERVICE IN KENILWORTH BY [SupremeTech.co.uk](http://SupremeTech.co.uk)**





## The new WAECO PerfectView monitors

The two flat-screen 5" and 7" monitors differ only in their size, and are otherwise equipped with the same performance features. LCD technology and LED backlighting ensure a premium picture display. Large, easily to reach pushbuttons make operation very convenient. Particularly practical: when required, the monitors can be removed without the cabling to protect them from theft. Other key features; LED background illumination, Optimum picture quality even at low temperatures, Two camera inputs with signal detection, Real-view or mirrored picture function via monitor, Picture settings can be saved for each camera input, USB-battery output, For 12-volt to 30-volt operating voltage.

## The new WAECO PerfectView cameras

We know from experience how different the expectations made of a reversing video system are in the recreational sector. That's why we have completely overhauled the PerfectView camera range and adapted them perfectly to both monitors. Two brand new cameras (CAM 50C & CAM 80C) & the tried-and tested twin camera CAM 33C1 ensure that no user wish goes unfulfilled. Other key features; cameras feature infrared Led's for night view, temperature controlled heater, IP68 rated camera housing, CAM80C offers 145o extra wide picture,

REVERSING CAMERA KIT CONTENTS: 5" or 7" LCD colour monitor, colour CCD camera, 20 m monitor-to-camera connection cable, set of cables for monitor, installation fittings for all components, instructions.

OPTION: All systems have option to fit a second camera and MagicWatch DMWE850RV Integrated Parking Distance Aid.

### WAECO PerfectView



### WAECO PerfectView



### WAECO PerfectView



### Entry-level reverse vision

Elegant colour camera in silver or white. Also featuring the 5" or the large 7" monitor. Two impressive basic solutions at an attractive price. CAM50C Camera available in white or silver.

- DRVS550 5" LCD & CAM50C SILVER KIT
- DRVS750 7" LCD & CAM50C SILVER KIT
- DRVS750W 7" LCD & CAM50CW WHITE KIT

### ... and for pros

The compact CAM80C motorised shutter camera sees more than the others: its wide 145° picture angle even detects peripheral obstacles. Two system versions with a 5" or 7" monitor.

- DRVS580 5" LCD & CAM80C SILVER KIT
- DRVS780 7" LCD & CAM80C SILVER KIT

### For optimal close-range and distance vision

Two systems with the unique colour twin camera with a motor operated shutter. The camera is equipped with a wide-range & a telescopic lens and therefore allows both excellent close-range and distance vision.

- DRVS590 5" LCD & CAM33C1 SILVER KIT
- DRVS790 7" LCD & CAM33C1 SILVER KIT

## WAECO SinePower

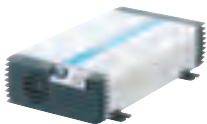
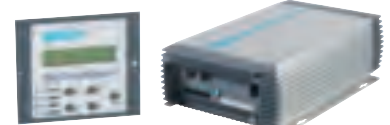
SinePower inverter series with continuous power ratings of 700 - 2500 watts clearly come up to professional standards. Delivering pure sine wave voltage, they are the best possible choice for highly sensitive and powerful electrical appliances. They meet industry standards and combine ultimate user comfort with invaluable technical features. The mains supply priority circuit with voltage synchronisation, for example, switches to the mains power as soon as it is available and ensures uninterrupted voltage supply to the connected appliances with a smooth switch-over. Or the automatic activation of the "sleep mode" when no 230 volt appliances are being operated - saving energy and reducing the strain on the on-board battery!

Optional remote wall control panel; DMCR9 Simple version with on off and LED indicator, or DMCR7 Low-voltage, over-voltage, Power on indicated by red LED overheat and overload indicated by red LED's, stand-by and power on indicated by green LED's. Both have 7.5mtr connection cable. Optional remote wall control panel; DMCR9 or DMCR7.

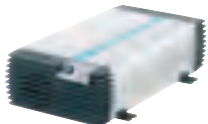
### NEW WAECO CombiPower

2000w 12v pure sine wave inverter with integrated automatic battery charger 12 or 24 volts / 2000 watts. UPS function (Uninterrupted power supply). Power support function boosts the external mains power supply with energy from the battery. Weight: 14 kg. W x H x D: 490 x 145 x 285 mm. Supplied with remote wall control.

- DCP2012 12volt version
- DCP2024 24volt version



DMSP702 - 12v DC  
Continuous power 700W Peak power 1400W  
(WxHxDmm) 190 x 90 x 380



DMSP1012 - 12v DC  
Continuous power 1000W Peak power 2000W  
(WxHxDmm) 225 x 117 x 435



DMSP1512 - 12v DC  
Continuous power 1500W Peak power 3000W  
(WxHxDmm) 225 x 117 x 465

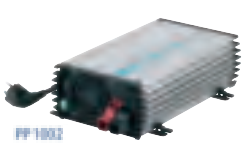


DMSP2012 - 12v DC  
Continuous power 2000W Peak power 4000W  
(WxHxDmm) 349 x 116 x 516



DMSP2512 - 12v DC  
Continuous power 2500W Peak power 5000W  
(WxHxDmm) 349 x 116 x 546

## WAECO PerfectPower



DPP1002 - 12v DC Modified sine wave inverter.  
Continuous power 1000W  
Peak power 2000W  
(WxHxDmm) 176 x 95 x 338



DPP2002 - 12v DC Modified sine wave inverter.  
Continuous power 2000W  
Peak power 4000W  
(WxHxDmm) 176 x 95 x 443

### WAECO SinePower Accessories - Remote wall control panel



DMCR9 Standard version with on off and LED indicator. Connection cable 7.5mtr. For use with :  
DMSP702 - DMSP2512  
DPP1002 - DPP2002



DMCR7 Low-voltage, over-voltage, Power on indicated by red LED overheat and overload indicated by red LED's, stand-by and power on indicated by green LED's. 7.5mtr connection cable. For use with :  
DMSP702 - DMSP2512

## INNOVTECH REVERSING CAMERA SYSTEMS



Wireless reversing camera very easy to install without need for linking cables. Hi resolution 345000 pixels camera with LED'S for night vision. 105 deg visual angle, Waterproof IP65 rated. Monitor 7" (17.7cm) active matrix LCD TFT colour screen, Power 12 or 24v dc. W196 x H 127 x D 27mm  
BVRVC7W Kit wireless camera 7" monitor & mounts



Motorised reversing camera, with 18m of cable, allowing direct rear view or a panoramic view of the road. Defogging and defrosting function integrated into the camera. Waterproof IP65 rated. Monitor 7" (17.7cm) active matrix LCD TFT colour screen, Power 12 or 24v dc. W196 x H 127 x D 27mm  
BVRVC7MOT Kit motorised camera with 18m cable 7" monitor & mounts.

WE CAN SUPPLY ANY DOMETIC - WAECO PRODUCT THAT IS AVAILABLE. PLEASE ASK. WE NOW OFFER INSTALLATION AND SAFETY INSPECTION SERVICE BY [SupremeTech.co.uk](http://SupremeTech.co.uk)



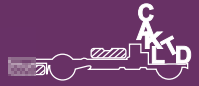
0844 414 2324



0844 414 2425



# AVTEX LCD TV's & ACCESSORIES



Electrical

AVTEX the brand for mobile 12 volt TV's. Superior build quality - designed to withstand the vibration of being moved around constantly. Highest quality screens with wide viewing angles and high grade components and build quality for long term reliability - ease of use - simple one button tuning with AQT - Designed for purpose not converted household mains TV's - from the outset AVTEX LCD TV's are designed to primarily operate on 12 volt dc reducing battery consumption by not needing power hungry mains transformers - comprehensive range of screen sizes with and without DVD player - multi standard digital Freeview and analogue tuner for use in UK & many European countries - excellent after sales service from AVTEX. Ideal for any mobile application, Motorhomes, Marine, Horseboxes, Narrowboats, Caravans & Camping.

## AVTEX 10" LED TV

The truly versatile W103D is a Digital/Analogue LED TV / DVD/CD player, with a built-in FM radio, a digital photo viewer, and PVR function allowing you to record programs to a USB memory device. Size 281W x 210D x 37Dmm Weight 1.25kg  
**TVW103DK** Black **TVW103DW** White

W103D



W164DR/  
W164DRS



## AVTEX 16" LCD TV

The W164DR COMBI is the most popular product in the stylish Avtex range. Loaded with functional, convenient features such as one button tuning and pause live TV even instant or schedule recording on to USB or external hard drive, yet still being very easy to use. The W164DR has a 16" widescreen LCD display with viewing angles and picture quality that we think you'll find hard to beat. Size 387W x 287H x 68Dmm Weight 5.1kg  
**TVW164DRK** Black Digital TV/DVD/CD/PVR.

W164TR



L185DR /  
L185DRS



## New TVW164DRSK now with built in HD FTA Satellite tuner as well as Freeview tuner.

**TVW164DRSK** Black Digital TV/DVD/CD/PVR/ SATELLITE

Designed for the leisure industry the W164TR benefits from the same high quality 16" LCD display as the W164DR, to combine superior viewing angles and picture clarity with uncomplicated operation. Size 387W x 287H x 68D mm Weight 3.5kg  
**TVW164TRK** Black Digital TV

L185TR



L215D



## AVTEX 18.5" LED TV

The beautifully styled, Ultra-Slim L185DR TV / DVD Combi is loaded with functional, convenient features such as One Button Tuning and Pause Live TV even instant or schedule recording to USB or external hard drive, yet remaining very easy to use. The L185DR has a high specification low power 18.5" widescreen LED display, with viewing angles and picture quality that we think you'll find hard to beat. Size .352.2W x 475.8H x 99.2D mm Weight 4.3kg  
**TVL185DRK** Black Digital TV/DVD

TVAK753 Carry case for the W164DR/TR



TVAK653 Carry Case for the W103D



The L185TR has the same qualities and functions as the L185DR but is supplied without DVD player. Size 352.2W x 475.8H x 99.2D mm Weight 4.3kg  
**TVL185TRK** Black Digital TV

## New TVL185DRSK now with built in HD FTA Satellite tuner as well as Freeview tuner

**TVL185DRSK** Black Digital TV/DVD/SATELLITE

## AVTEX 21.5" LED TV

The new ultra slim L215DR LED TV / DVD / PVR combi just oozes class, quality and sophistication, packed with features such as the Avtex unique one button AQT tuning system, the ability to record or pause live TV to USB or external hard drive. The L215DR sets a new standard in mobile portable entertainment systems. Size 550W x 376H x 46D mm Weight 4.8kg  
**TVL215DRK** Black LED digital TV / DVD / PVR



TVKAH100G

## TVKAH100G FREEVIEW SCART STICK ADAPTOR

Convert any analogue TV with a scart socket to a fully featured digital TV simply and easily. The **TVKAH100G** is the perfect digital solution for any size TV, however being so small and discrete it is ideally suited to portables or any where that space is at a premium. Not only does the **TVKAH100G** operate from 240v mains AC but using the cigar lighter lead supplied, the unit will operate on either 12 or 24v DC.

## NEW InovTech LED TV'S

### Practical Caravan Best Accessory Award 2012

InovTech use LED technology so that, as well as having excellent picture quality with wide viewing angles, the TVs themselves are thin, light and use very little power - around 2 Amps on 12V. This is a true 12V TV and is supplied with a dedicated 12V lead the TV also has built in voltage stabilisation 9V - 30V making it ideal for Motorhomes, Boats & Trucks. Tuner DVB-T HD MPEG-2, MPEG-4 Digital Freeview. USB port included so you can PVR record programmes on the TV to a USB flash drive or portable device. Built in right loading DVD player, SD card reader, Touch Sensitive edge menu keys (presence of touch displays menu keys on the border of the screen), Media accepted DVD Audio/Video CD Audio/Video, Formats read JPEG,MP3,DivX, MPEG-2, MPEG-4. Consumption Max/usage/standby: 40/25/1 watts.



TVIN156



TVIN185

**TVIN156** InovTech 15.6" Widescreen HD LED TV DVD PVR with Digital Freeview tuner  
Dimensions: W 401 x H 281 x D 42mm. Weight 1.96kg.

**TVIN185** InovTech 18.5" Widescreen HD LED TV DVD PVR with Digital Freeview tuner  
Dimensions: W 461 x H 315 x D 49mm. Weight 3.26kg.

WE NOW OFFER INSTALLATION SERVICE BY [SupremeTech.co.uk](http://SupremeTech.co.uk)



[www.caktanks.com](http://www.caktanks.com)

[sales@caktanks.co.uk](mailto:sales@caktanks.co.uk)





# TV AERIALS



## 360° Omni-Directional TV Antenna 26dB UHF 9dB VHF-B3

MINI-antenna (diameter: 31cm only) specially designed to receive UHF channels. However, a special circuit configuration and a high-gain amplifier make it possible to receive VHF B3 programs too.

**TVWNG** Wing omni-directional TV aerial



Horizontal reception diagram

### Specifications

Gain with amplifier:	CH 2-4	0dB
	CH 5-12	9dB
	CH 21-69	26dB
Power supply:	12/24 Volt-230 Volt	
Diameter:	31 cm	
Height:	16.5 cm	
Weight:	1 Kg	

### Package Contents

- 1 Antenna complete with 5 m coax cable and 3 F connectors
- 1 Adjustable gain amplifier, with 2 outlets for 2 TV sets, powered off 12, 24 and 230 volts.



## Omni-directional HIGH SPEED TV Antennas

### WING RANGE OF digital TV AERIALS (FREEVIEW COMPATIBLE))

They have been designed with an aerodynamic shape for the fastest campers. Each aerial has a special ergonomic foot to allow easy installation on even the most angular shaped roof of the latest streamlined campers and caravans. All Wing models have been designed to receive Terrestrial Digital TV signals using 30+ channel DVB-T FREEVIEW set top box for home for the future, while still being able to receive all the existing Analog TV channels. (To receive Freeview a decoder must be present)..



## 360° Omni-Directional TV Antenna 26dB UHF 16dB VHF-B3

A combination of electronic amplifier high sensitivity to receive weaker TV signals and special antenna design enable you to receive TV programs at the lowest frequencies, too, while maintaining outside dimensions within 38 cm.

**TVWNG11** Wing 11 high sensitivity omni-directional TV aerial



Horizontal reception diagram

### Specifications

Gain with amplifier:	CH 2-4	3dB
	CH 5-12	16dB
	CH 21-69	26dB
Power supply:	12/24 Volt-230 Volt	
Diameter:	38 cm	
Height:	16.5 cm	
Weight:	1.2 Kg	

### Package Contents

- 1 Antenna complete with 5 m coax cable and 3 F connectors
- 1 Adjustable gain amplifier, with 2 outlets for 2 TV sets, powered off 12, 24 and 230 volts.



## NEW TELEPLUS X2

New aerial with pivot mechanism for Horizontal and Vertical polarity adjustment from inside the vehicle. Thanks to this it is possible to receive all TV (Digital & Analog) signals which are transmitted on both horizontal and vertical polarity with top performance and higher sensitivity to weak signals. High gain 38 dB with amplifier. (Digital broadcasting caused the vertical polarity signals to increase in some countries such as Italy & UK). Great for boats.

**TVPLUS2LP**  
**TVPLUS2SP**

Teleplus2 165cm pole TV aerial  
Teleplus2 39cm pole TV aerial

## EXTERNAL TV AERIAL INPUT/OUTPUT

The external TV Aerial socket comes with 5 metres of 75 Ohm cable complete with pre fitted male plug. The exterior socket has a female connection. Socket is 50mm Wide x 32mm High and requires a 26mm hole. Easily fitted with 2 screws and Sikaflex 512 sealant. Colour: White.

**TV9608AW**

External TV aerial socket.



TVSFTVSAT



TVSFTV

## UHF TV SIGNAL FINDER - TVSFTV

Designed and Developed by a Caravanner for the Leisure Market. A pocket sized UHF TV signal finder designed to enable you to ensure that your directional aerial is pointing in the correct direction for optimal reception. Simply connect the aerial lead from your TV equipment to the TV Signal Finder then rotate the aerial until the greatest number of led's are lit, this indicates the strongest signal and therefore the best position for your aerial. The unit is supplied with full instructions, a PP3 battery and is guaranteed for 12 months. Designed and Manufactured in the UK.

## COMBINED UHF TV & SATELLITE SIGNAL FINDER - TVSFTVSAT

NEW and UNIQUE product. UHF TV and Satellite signal finder in one neat & simple to use unit. Even greater sensitivity - 12 Led's plus an audible signal indicator-and is ideal for the more remote areas of the UK, including Scottish Highlands, Lowlands and Ireland. The most sensitive TV signal finder of our range and probably on the market, with the added bonus of a built in Satellite Finder. The unit is supplied with a battery, 30cm patch cable and full instructions. Extra bright led's are used for daylight operation plus an audible signal level indication. As used by professional aerial installers who pay £hundreds for the nearest equivalent test meter!! A "must have" if you watch TV in your caravan, motor-home or boat. Designed and manufactured in the UK.

WE NOW OFFER INSTALLATION SERVICE BY [SupremeTech.co.uk](http://SupremeTech.co.uk)



0844 414 2324



0844 414 2425



# TELECO SATELLITE SYSTEMS



Electrical

## MANUAL SATELLITE DISH SYSTEM EQUIPPED WITH DIGITAL SAT FINDER AND ELECTRONIC INCLINOMETER

The Voyager G3 Digimatic has been specially designed and built by Teleco to make manual searching of digital satellites easier for the user in just a few, quick and simple operations. Currently, the biggest difficulty in manually locating a satellite broadcasting digital TV signals is linked with the fact that digital signals are displayed on TV screens with a certain delay. Therefore the user is forced to carry out pointing in very slow movements to prevent the risks of going past the required satellite without finding it. To solve this problem - shared by thousands of camper users - Teleco has applied the most advanced technologies in developing its new Voyager G3 Digimatic with DSF80/E Digital Finder, an electronic elevation meter displaying the absolute dish angle even when the vehicle is not level. The Voyager is installed with a digital inclinometer in the hinge providing an output reading of the dish angle. The DSF80/E is a device specially designed and built for all those users who wish to be able to quickly locate their required DIGITAL satellite with a manual dish system, avoiding all the "delay" issues connected with digital broadcasting. It is also extremely helpful for all the owners of LCD television sets (instead of traditional cathode ray tube TVs) which, being also the product of digital technology, will display pictures on their screens after a certain "delay".

50cm Dish will be fine in the UK, for most of Western Europe a 65cm will generally suit. But for southern Europe (France, Spain, Portugal and Italy etc) an 85cm system will be required.

**Voyager G3 Digimatic** Each Kit contains: • Pre-assembled satellite antenna, complete with folding mast and connecting cables. • Dish with Universal LNB • Digital Finder DSF80/E • Installation and operation manual.

**TVSVG350** Voyager G3 Digimatic 50 (49 x 45.5cm Dish)

**TVSVG365** Voyager G3 Digimatic 65 (72 x 67 cm Dish)

**TVSVG385** Voyager G3 Digimatic 85 (91 x 85 cm Dish)

**Voyager G3 is available with 52cm (LM) or 33cm (SM) Mast please specify at time of ordering**

**TVSVG365** Voyager G3 Manual 65 (72 x 67 cm Dish) Without digi satfinder

## TELECO DSF80 DIGITAL SATELLITE FINDER - TVDSF80

The easiest way to manually search for a satellite anywhere. Simply choose 1 satellite from the 8 preprogrammed, the sat finder will then only give you signal strength indications for that satellite. This is Ideal due to the all or nothing nature of digital signals. The DSF80 makes finding satellites as easy as using the much more costly professional installer units. An excellent piece of kit will save you lots of effort each time you set up. This is a similar finder to the one incorporated in the Voyager Digimatic G3 kit.



DSF 80  
• 8 satellites  
• 8 channels  
• 8 levels of signal strength  
• 8 levels of signal strength

## VOYAGER MOTOSAT

SEMI-AUTOMATIC MOTOR-DRIVEN SATELLITE ANTENNA

Equipped with 2-figure display built into mast that provides information on dish angle for ease of set up. **Voyager MotoSat is available with 52cm (LM) or 33cm (SM) Mast please specify at time of ordering** Weight: 85 DISH 10.2KG 65 DISH 8.0KG

**TVSVGMT65** Voyager MOTOSAT 65 (63.5 x 59 cm Dish)

**TVSVGMT85** Voyager MOTOSAT 85 (85 x 78 cm Dish)

## VOYAGER MOTOSAT DIGIMATIC

This model features a digital DSF80/E tracking unit with Beeper and LED indicator strip signal indicator.

**TVSVGMT65DG** Voyager MOTOSAT Digimatic 65 (63.5 x 59 cm Dish)

**TVSVGMT85DG** Voyager MOTOSAT Digimatic 85 (85 x 78 cm Dish)

## TELECO TeleSat

Stand-alone pointing system with wall mounted control panel, it can be coupled to any Satellite Receiver (not supplied). Especially suitable for connection to SKY receivers.

- Stores the most important satellites: Hot Bird, Astra19, Atlantic Bird3, Astra 28
- The safety system closes the antenna automatically upon starting the vehicle.
- Dish size: TELESAT: 63,5x 59 cm

**All operations are performed on a simple Wall Panel via 3 KEYS ONLY!**

1 key: Selects the satellite and starts the search 2 Antenna lowering key 3 ON/OFF key

Control Unit • Power Supply: 12 Volt • Max Consumption: 2.0 A

• Size: 136x198x62 mm • Weight: 780 g

**TVSTLST65** AUTOMATIC SATELLITE ANTENNA WITH WALL PANEL

## TELECO AUTOMATIC SATELLITE SYSTEMS FLATSAT EASY

Stand-alone pointing system with wall-mounted control panel, it can be coupled to any Satellite Receiver (not supplied). Especially suitable for connection to SKY receivers.

Stores all the most important satellites: Hot Bird, Astra19, Astra 23, Atlantic Bird3, Hispasat, (Thor) Astra 28, Sirius.

The safety system closes the antenna automatically upon starting the vehicle

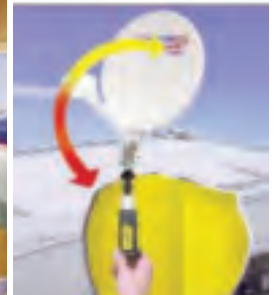
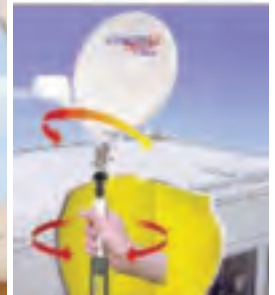
Supplied with wall control and dish control box. Requires suitable Satellite Receiver.

Twin LNB option available for connecting sky+

**TVSFSESY50** Flat Sat Easy 50: Dish size 49 x 45,5 cm Only 15cm High when folded

**TVSFSESY65** Flat Sat Easy 65: Dish size 72 x 67 cm Only 17cm High when folded

**TVSFRESY85** Flat Sat Easy 85: Dish size 91 x 85 cm Only 17cm High when folded



**Voyager 50**

**Voyager 65**

**Voyager 85**

Width 65cm

Width 88cm

Width 106cm

Depth 17cm

Depth 18cm

Depth 18cm



MOTOSAT



DSF80/E



TELECO TeleSat Automatic Pointing Satellite Antennas



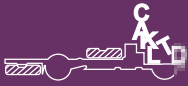
FLATSAT EASY



FLATSAT EASY CONTROL PANEL & CONTROL BOX

THE FULL RANGE OF TELECO TV & SATELLITE PRODUCTS ARE AVAILABLE AND CAN BE INSTALLED FOR YOU AT OUR [SupremeTech.co.uk](http://SupremeTech.co.uk) INSTALLATION CENTRE IN KENILWORTH.





# SATELLITE SYSTEMS



## ROADPRO SAT DOMES

The ROADPRO Sat domes are the well respected sat domes formerly marketed under the Camos branding. As with all RoadPro dome systems, it's incredibly easy to operate; most users will only ever have to switch the control box on - that's it! When the sat-dome has found the satellite (usually within 30 seconds) the controller can be switched off so that they system uses virtually no power when in operation.

We recommend professional installation of any satellite TV system but with just one cable to connect to the controller and a simple 12V electrical connection, RoadPro sat-domes are easier to install than any other automatic satellite TV system.

### TVSD3201 RoadPro 30cm High Sat Dome static.

With all the advantages of a dome satellite TV system, this model is designed for use when the vehicle is parked. It's a low-profile model, measuring just 30cm high and so ideal when height is a consideration.

This model will pick up BBC, ITV and all UK channels as far south as southern France. Further south - as far as southern Spain - a variety of channels will always be available including BBC News, Sky News and most BBC radio stations. Six satellites are programmed into the controller so that - with a suitable receiver - hundreds of TV & radio channels are available all over Europe.

### TVSD3202 RoadPro 40cm High Sat Dome static.

With all the advantages of a dome satellite TV system, this model is designed for use when the vehicle is parked. Its larger dish gives maximum coverage across Europe. This model will pick up BBC, ITV and all UK channels as far south as Barcelona. Further south - as far as southern Spain and even Morocco - a variety of channels will always be available including BBC News, Sky News and most BBC radio stations. Six satellites are programmed into the controller so that - with a suitable receiver - hundreds of TV & radio channels are available all over Europe.

RoadPro sat-domes come with the following parts in the box:

- Sat-dome - 1 HQ co-ax cable (1m) - Control box incl. power supply
- 1 Cable-entry box - 1 HQ co-ax cable (10m) with F-plugs - Installation and usage instructions - 12 screws (3 in dome cover, 9 in bag)

Optional mounting feet for easy removal of any RoadPro Sat-Dome we have special mounting plates. These are mounted permanently to the vehicle's roof and the sat-dome's feet are screwed to them.

## ROADPRO MECATRONIC SATELLITE SYSTEM - TVSDMEC80

Ease of use, reliable operation, rugged build quality using top quality components and a very competitive price are a great combination in this Mecatronic automatic folding dish system.

With its 80cm dish, it's an excellent choice for people travelling to Spain & Portugal, Italy or into eastern Europe.

Outside, the motor unit and dish are just 19cm high when the dish is parked and weigh only 15.5Kg. Inside, the control box can be hidden away and the display panel fits discreetly onto an interior panel.

There are only three buttons on the display panel: POWER ON/OFF, SATELLITE SELECTION and SATELLITE SEARCH. With a choice of all the popular satellites and an average search time of under one minute, satellite TV in your motorhome, caravan, truck or boat couldn't be easier!

## TELECO DIGITAL SATELLITE RECEIVER - TVSTSDR5000CI

Satellite Digital Receiver to receive all Free to Air programs and Encrypted programs by inserting the special CAM module ( not supplied ) and Smart Card (not supplied). Built to feature latest-generation MONOCHIP microprocessors, it has been specially designed to make dish pointing Fast and Accurate. The special CAMPING MENU contains all the necessary dish pointing information, e.g. Satellite List, Signal level meter, and Signal quality meter.



**Warranty:** When fitted by [SupremeTech.co.uk](http://SupremeTech.co.uk), an approved RoadPro installer, all models have a five-year warranty which covers parts and labour against faults in manufacture or design. If the unit is not installed by an approved RoadPro installer, a three-year warranty applies. (This applies to units used for leisure purposes. If used for commercial applications, the warranty is for two years.)

Sat Dome search controller (Size 245mm W x 42mm H x 146mm) included with sat dome will search for Astra 2 (N & S) / Eurobird 1, Astra 1, Hotbird, Sirius, Atlantic Bird 3 & Hispasat satellites. No remote control or receiver included. Can be used with any satellite receiver including Freesat, Free to Air & SKY receivers or Televisions with built in satellite receivers. Current consumption when in use and search completed: <0.1 Amp. Weight of dish & motor Approx 9.5Kgs. 76cm diameter installation area.



TVSTSDR 5000 CI

## ELECTRICAL & ALKO COMPONENTS

- R913P** 13-pin trailer or caravan plug to suit the newer European type 13-pin towbar sockets.
- R912SP** 7-Pin grey plastic trailer plug – Supplementary S-Type to suit grey towbar socket for powering trailer/caravan internal electrics.
- R912NP** 7-pin trailer plug in black plastic housing. N-type to suit black towbar socket for powering trailer/caravan road lights.

## ALKO AXLE HUB NUTS

These nuts MUST NOT be reused, always fit new nuts, and torque to 290 Nm

**ALKO1202** AL-KO one shot axle nut, suits 2361 hub drums, 36 mm across flats.

**ALKO1079** AL-KO one shot axle nut, suits 1637 and 2051 hub drums, 32 mm across flats.

**ALKO0977** Safety breakaway cable for all couplings with burst ring and hook. Legal requirement.



WE CAN SUPPLY ANY ALKO, BPW, BRADLEY OR KNOTT SPARE PART YOU MAY REQUIRE.

WE NOW OFFER INSTALLATION AND SAFETY INSPECTION SERVICE BY [SupremeTech.co.uk](http://SupremeTech.co.uk)



0844 414 2324



0844 414 2425